

ASIONIC® - 400W

BATTERY OPERATED ULTRASONIC WATER METER



ASIONIC® - 400W

BATTERY OPERATED ULTRASONIC WATER METER

Features

- Wear Free Ultrasonic Technology with RF / GPRS / GSM / WMBUS / Zigbee / RS485 Connectivity
- Bidirectional Flow Measurement
- Long Battery Life
- Low Pressure Drop
- Compatible with automatic reading system
- In accordance with OIML R-49 and ISO 4064
- OMS Facility Available
- For Clear Potable Water



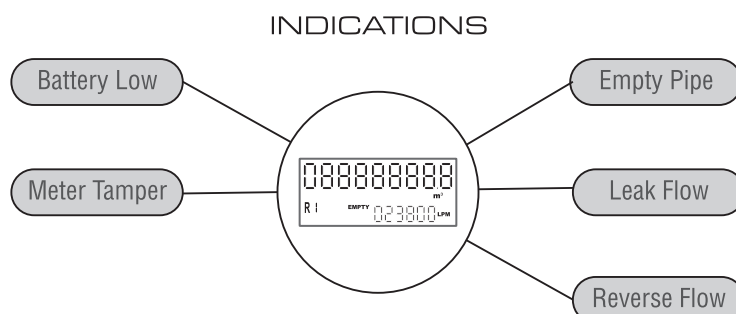
Description

Advanced methods and technologies were implemented in order to present ASIONIC®-400W. The meter is a highly accurate ultrasonic water meter for residential applications. The meter is an integral and hermetically sealed closed static water meter intended for registration of cold and hot water consumption. High accuracy at very low flow rate assures minimum losses of unmeasured water. ASIONIC®-400W is compatible with IoT and it can be installed in a vertical or horizontal direction. The meter complies with IP-68 protection class.

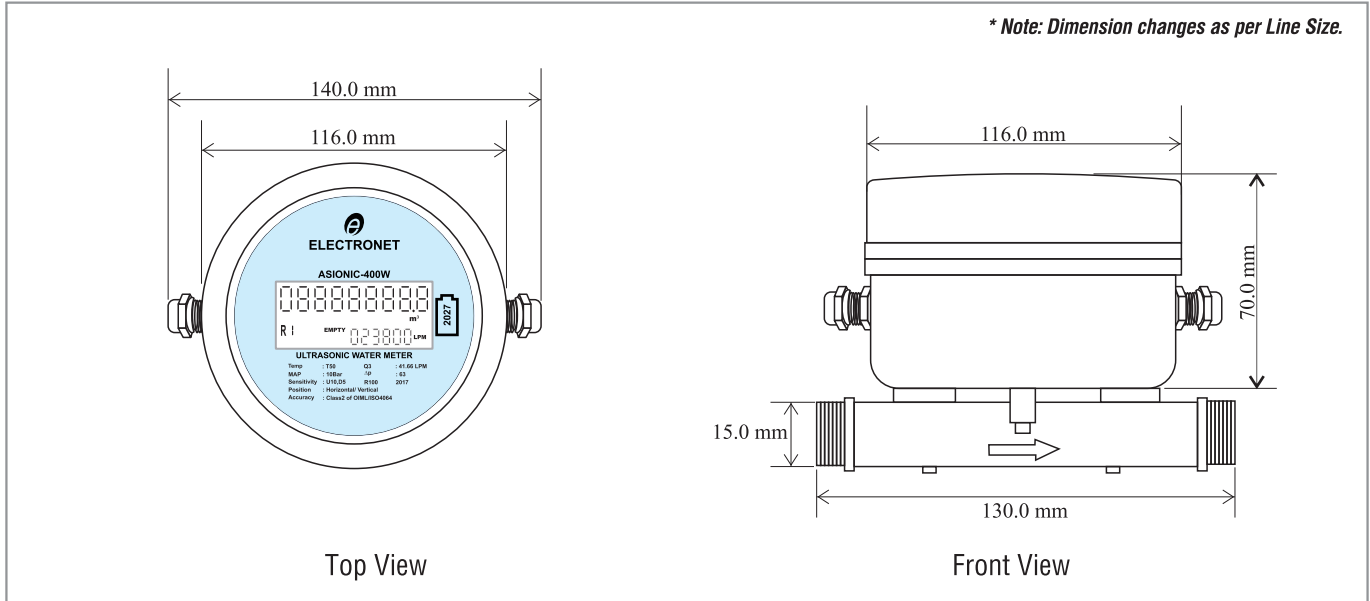
Technical Specifications

Testing Pressure	16 Bar
Nominal Pressure	10 Bar
Minimum Pressure	0.1 Bar
Pressure Loss	< 0.63 Bar
Media Temperature	0.1 to 60°C
Remote Reading	Wireless
Downloading Store Data	Through Optical Port using proprietary Water AMR software (Apha Water Meter Software)
Battery life	10 Years
RF Frequency	865 MHz / 433 MHz / 915 MHz
Available line Sizes	15, 20, 25, 32, 40 & 50 NB
MOC – Electronics Enclosure	Die Cast Aluminium / SS316 / ABS
MOC – Flow Tube	SS304 / SS316 / ABS / Brass
Process Connection	BSP Threading (Male) / Flanged (Only for 50 NB)
Certification	CE

LCD INDICATIONS



Assembly Overview



Dimensional Details

Line Size		Length 'L' (mm)	Overall Height 'H' (mm)	Width 'W' (mm)	Weight (Kg)	Threads/ Flanged
Inch	NB					
1/2"	15	130	135	95	0.98	BSP
3/4"	20	130	135	95	0.95	BSP
1"	25	160	140	95	1.2	BSP
1 1/4"	32	160	145	95	1.3	BSP
1 1/2"	40	160	150	95	1.5	BSP
2"	50	200	160	95	2	BSP
2"	50	210	160	95	4.5	SS Flanged

Flow Rate Performance Data

Q4 (m³/hr)		Q3 (m³/hr)		Q2 (m³/hr)		Q1 (m³/hr)		R
2	3.125	1.6	2.5	0.0048	0.008	0.003	0.0050	500
3.125	5	2.5	4	0.008	0.013	0.0050	0.008	500
5	7.875	4	6.3	0.013	0.0202	0.008	0.0126	500
7.875	12.5	6.3	10	0.0202	0.032	0.0126	0.02	500
12.5	20	10	16	0.032	0.051	0.02	0.032	500
20	24	16	20	0.051	0.064	0.032	0.04	500
20	24	16	20	0.051	0.064	0.032	0.04	500

Ordering Information

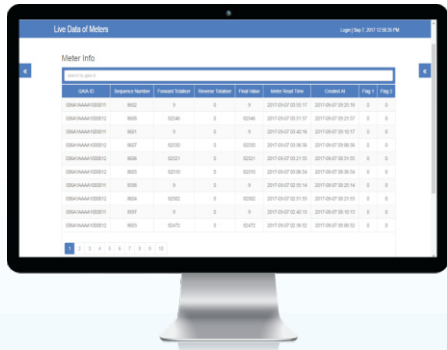
Sample Order Code : 01A-22A-24B-53A-54D-66A-72B-92A

Parameter	Code	Value		
01 Line Size	01A	15 NB	01D 32 NB	
	01B	20 NB	01E 40 NB	
	01C	25 NB	01F	50 NB
22 MOC Electronics Enclosure	22A	Die Cast Aluminium		
	22B	SS316		
	22C	ABS Plastic		
24 Power Supply	24B	24 VDC		
	24C	Battery Operated		
53 * Communication Output 1	53A	Rs485		
	53G	Pulse (1-99L)		
	53Y	None		

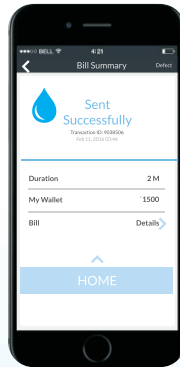
Parameter	Code	Value		
54 * Communication Output 2	54A	GSM		
	54E	GPRS		
	54G	RF 1 Km		
	54H	WMBUS		
	54I	Zigbee		
66 Process Connection	54Y	None		
	66A	Threaded		
	66B	Flanged (Only for 50 NB)		
	66E	Tri Clover		
72 MOC Flow Tube	72A	ABS Plastic		
	72B	SS304		
	72D	SS316		
	72F	Brass		
92 Auto Shut-Off Valve	92A	15 NB	92E 40 NB	
	92B	20 NB	92F 50 NB	
	92C	25 NB	92Y None	
	92D	32 NB		

Note :
 • Due to our continuous product revisions, design specification and model numbers are subject to change without notice.
 • Accuracy defined at Lab Conditions.
 • For other requirement please consult factory.
 * At a time only one Communication Output is possible.
 * For RS485 or Pulse communication output power supply will be 24VDC
For Asterisk (*) mark kindly consult sales office before concluding.

Water Usage Monitoring & Bill Payments



Web App



Mobile App



Smart Water Metering
Save Water & Work



Wireless Data Collection
From Water Meters



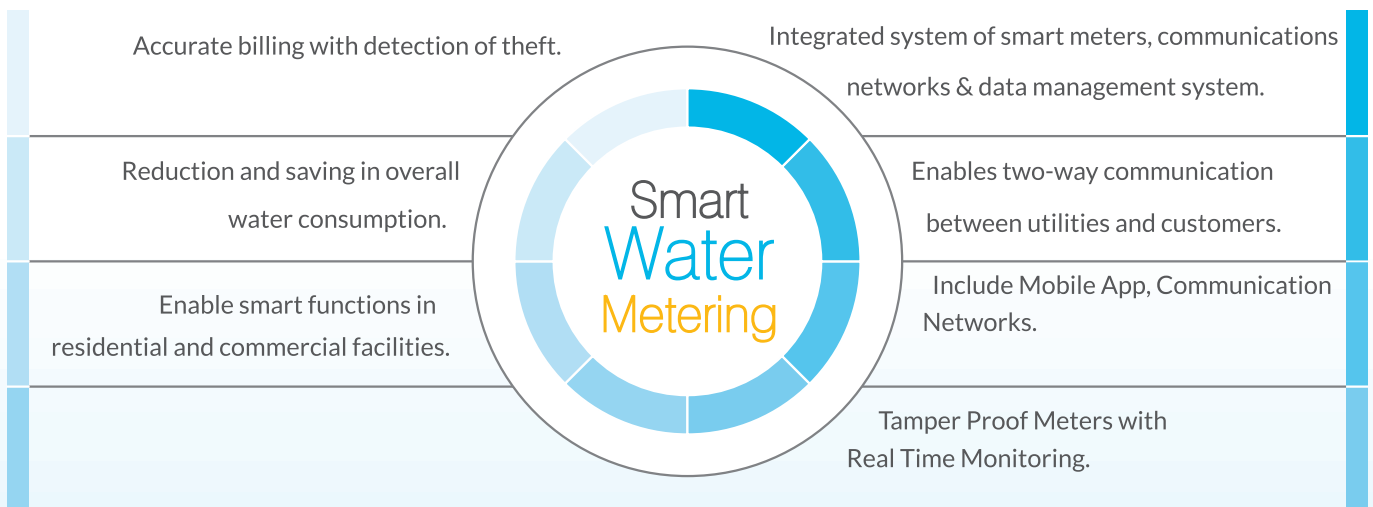
Mobile App for Water
Usage & Bill Payments



Keep Account of
Water Usage

Using Web & Mobile Applications

Features



ELECTRONET EQUIPMENTS PVT. LTD.

Factory Address:

Plot No. 8, (SEZ) Phase 1, Kesurdi MIDC,
Khandala, Dist.- Satara
Pin: 412 801, Maharashtra, India.

Registered Office:

Plot No. 84, 85, 86, Tiny Industrial Estate,
Kondhwa Budruk,
Pune-411 048, Maharashtra, India.



+91-20-26931476/2039



ho@eeplindia.com



+91-20-26934122



www.eeplindia.com

* Due to our continuous product revisions, design specification and model numbers are subject to change without notice.