

## ELMAG<sup>®</sup> - 600W

ELECTRONIC WATER METER



# ELMAG® - 600W

## ELECTRONIC WATER METER

### Features

- Electronic replacement to mechanical water meter
- Battery Operated
- Real time data
- Reliable connectivity
- Accurate measurement
- Tampering protection
- Low pressure loss
- Simple & cost effective construction



### Description

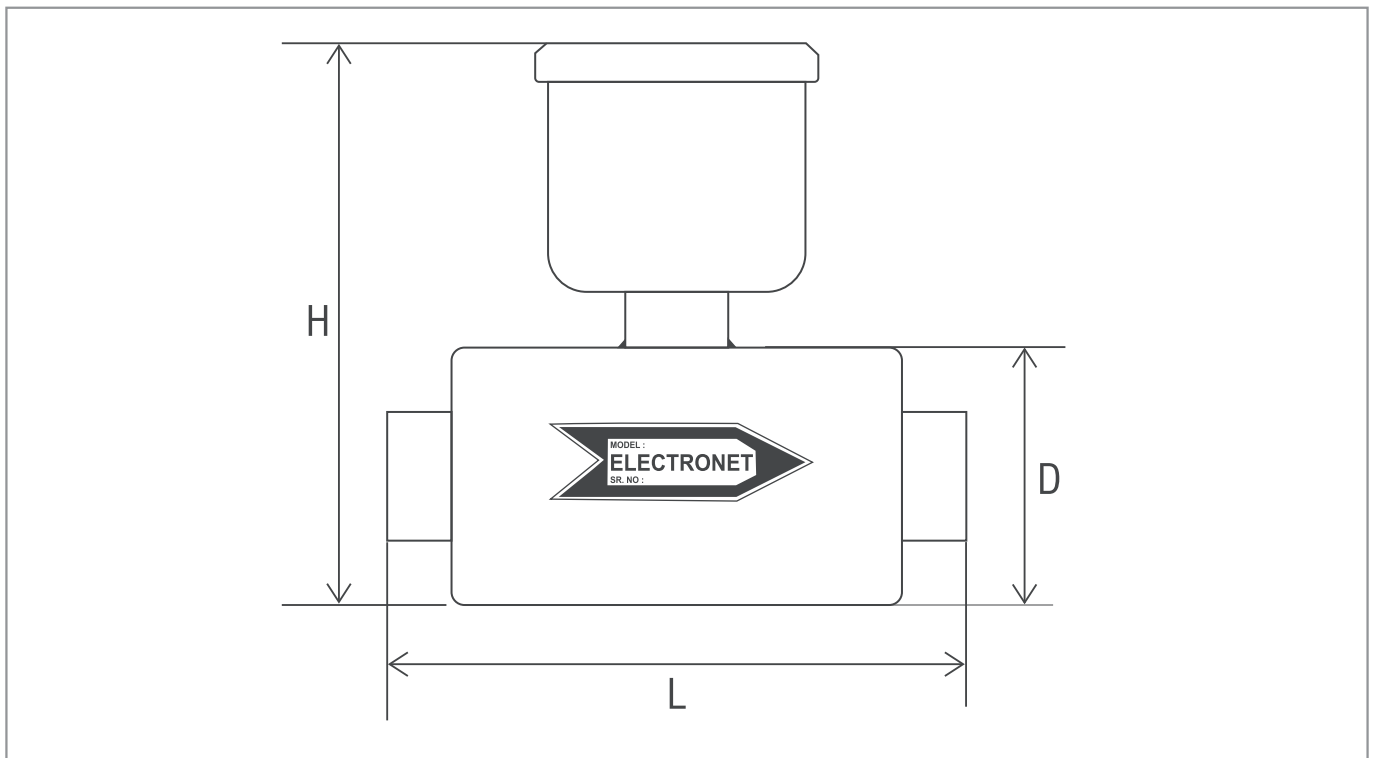
**N**o Power? No Problem !! When no mains power is available, Electronet series battery powered ELMAG®-600W gives the flexibility to install a reliable water flow meter virtually anywhere without distorting accuracy & performance. ELMAG®-600W is provided with long battery life. ELMAG®-600W is extremely easy to use, simple to install into position & no regular maintenance required. The product is engineered for various industrial as well as domestic applications such as 'Municipal & Industrial water applications, Cooling tower, water treatment etc. The graphic display provides indication for flow rate & totalized flow with key selection. The display auto shuts off after 10 minutes, which saves the battery life. The display can be turned ON by pressing the 'enter' key. IT'S AN ELECTRONIC WATER METER.

### Technical Specifications

Media	Water
Conductivity	> 5 $\mu$ S/cm
Viscosity	200 cp max
Line Size	15 NB to 40 NB
Excitation	Pulsed DC
Display	4 Digit for Flow Rate & 8 Digit for Totalised Flow LCD Display
Calibration Range	As per requirement (Factory Calibrated)
Accuracy	$\pm$ 0.5% of F. S. @ Velocity > 0.5 m/s
Linearity	$\pm$ 0.5% of F. S.
Repeatability	$\pm$ 0.2% of F. S.
Temperature Coefficient	$\pm$ 0.05% per $^{\circ}$ C
Process Temperature	65 $^{\circ}$ C max
Process Pressure	5 kg/cm <sup>2</sup> max
Material of Construction	Electrode-SS 316L
Power Supply	Inbuilt Battery 3.6 V, 19 Ah
Low Bat Indication	Provided
Battery Life	2 to 10 years depending upto sampling time
Response Time	< 10 Sec
Transmitter Enclosure	Die Cast Aluminum IP-66, Flow Tube IP-68

Process Connections	BSP Threaded (Female)
Operating Conditions	Temperature 0 to 55 °C/Humidity 5 to 95% non condensing
Data Logging	For 10 years (per day 1 sample)
<b>OPTIONAL</b>	
Communication Port	1) RS 232 for Data Downloading 2) Automatic Meter Reading (AMR-RF)
Note : For process conditions other than above please consult factory.	

**Dimensional Details**

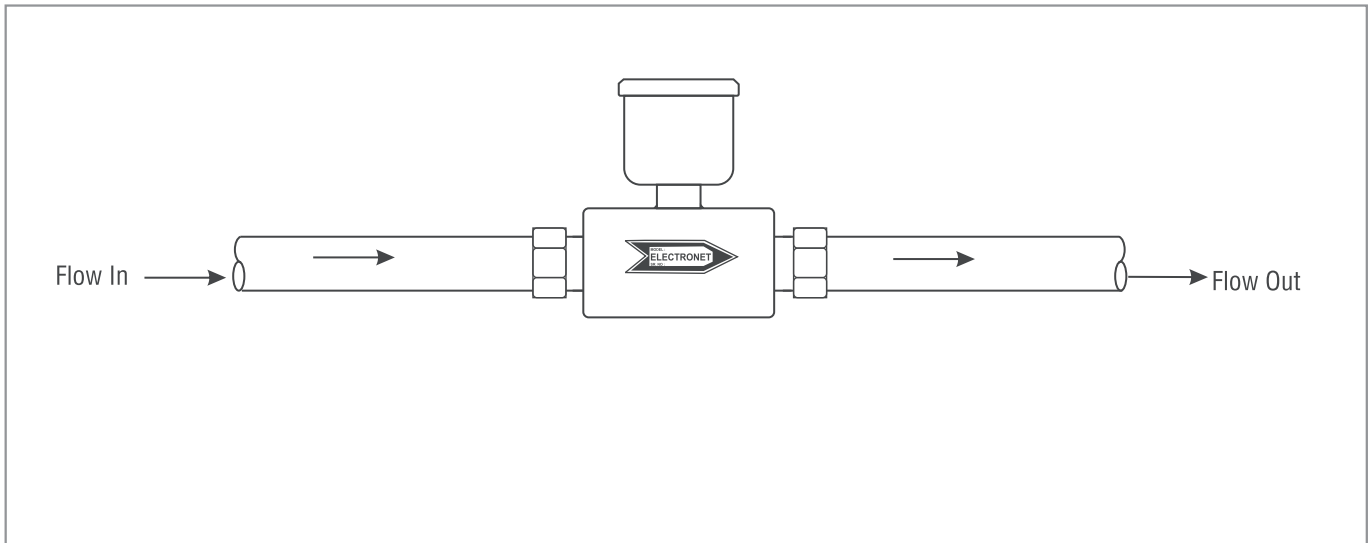


**Dimensional & Flow Range Details**

Line Size		Length 'L' (mm)	Diameter 'D' (mm)	Height 'H' (mm)	Flow Range (m <sup>3</sup> /hr)		
Inch	NB				Min.	Normal	Max.
1/2"	15	88.9	100	180	0.03	1.2723	6.4
3/4"	20	98.4	100	180	0.11	2.2619	11
1"	25	107.9	100	180	0.18	3.5341	18
1 1/4"	32	117.5	100	210	0.29	5.7906	29
1 1/2"	40	127.0	100	210	0.45	9.05	45

Note : • Typical mounting dimensions for reference  
 • Standard factory calibration for 0 to 2 m/s velocity  
 • Max. Flow Range in LPH/LPM is upto 9999

Installation Drawing



Ordering Information

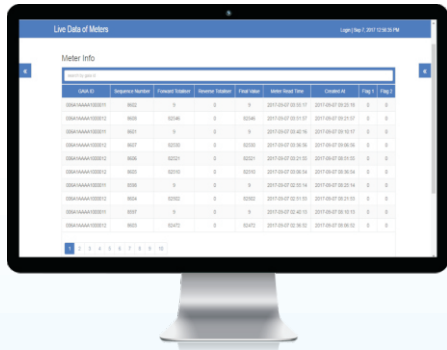
Sample Order Code : 01A-22A-24B-53F-54A-66B-72B

Parameter	Code	Value			
01	Line Size	01A	15 NB	01D	32 NB
		01B	20 NB	01E	40 NB
		01C	25 NB		
22	MOC Electronics Enclosure	22A	Die Cast Aluminium		
		22B	SS316		
		22C	ABS Plastic		
24	Power Supply	24B	24 VDC		
		24C	Battery Operated		
		24D	Solar + Battery Operated		
53	Communication Output 1	53A	RS 485		
		53B	RS 232		
		53Y	None		
54	Communication Output 2	54A	GSM		
		54C	RF 100 Meters		
		54D	RF 2.5 Km		
		54Y	None		
66	Process Connection	66A	Threaded		
		66E	Tri Clover		
72	MOC Flow Tube	72A	ABS Plastic		
		72B	SS304		
		72D	SS316		

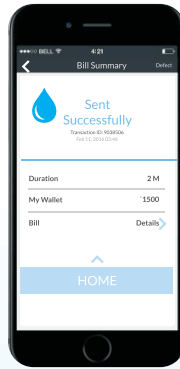
**Note :**

- Due to our continuous product revisions, design specification and model numbers are subject to change without notice.
- Accuracy defined at Lab Conditions.
- For other requirement please consult factory.

# Water Usage Monitoring & Bill Payments



Web App



Mobile App



Smart Water Metering  
Save Water & Work



Wireless Data Collection  
From Water Meters



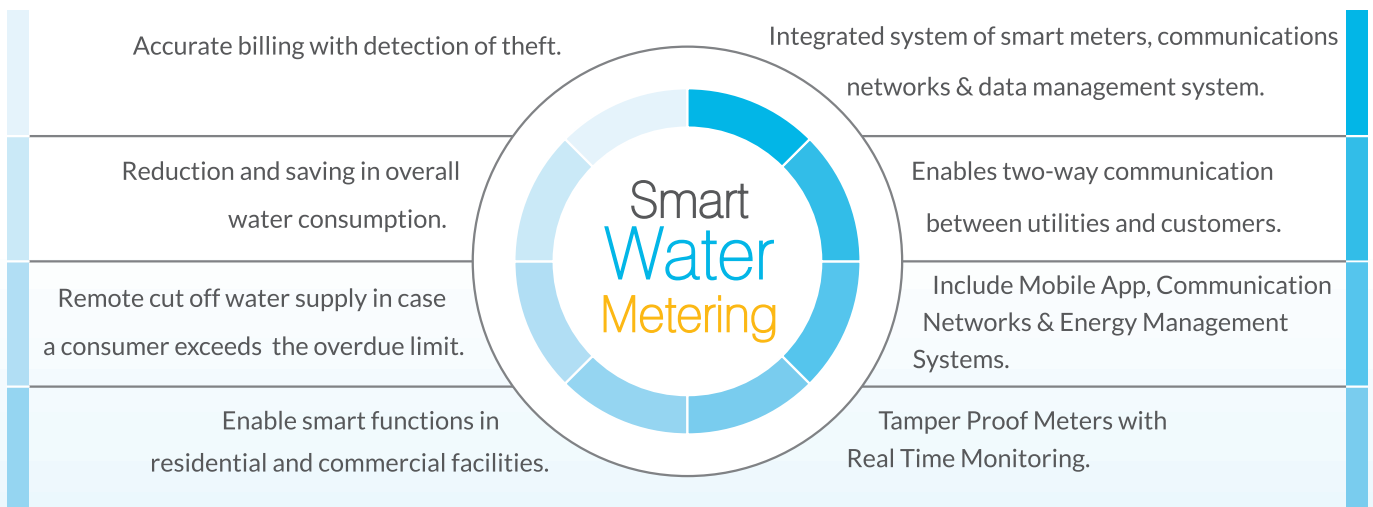
Mobile App for Water  
Usage & Bill Payments



Keep Account of  
Water Usage

## Using Web & Mobile Applications

### Features



### ELECTRONET EQUIPMENTS PVT. LTD.

#### Factory Address:

Plot No. 8, (SEZ) Phase 1, Kesurdi MIDC,  
Khandala, Dist.- Satara  
Pin: 412 801, Maharashtra, India.

#### Registered Office:

Plot No. 84, 85, 86, Tiny Industrial Estate,  
Kondhwa Budruk,  
Pune-411 048, Maharashtra, India.



+91-20-26931476/2039



ho@eeplindia.com



+91-20-26934122



www.eeplindia.com

\* Due to our continuous product revisions, design specification and model numbers are subject to change without notice.